

PCB TERMINALS KEY OPERATED MINISWITCHES

Type **TVCS14** has nylon-glass moulded body, nickel-plated rotor.



High quality contact, signal switches.

Spring brush contact system.

Adjustable stop not available.

Features: 1 pole
 2, 3, 4 positions and 4 positions non stop.
 Non shorting contacts (shorting not available).

Index angle: 90°.

Index torque: 0.4 / 0.6Kgm.

Key entry/withdrawal in all positions.

This product is ESD (electrostatic discharge) resistant.

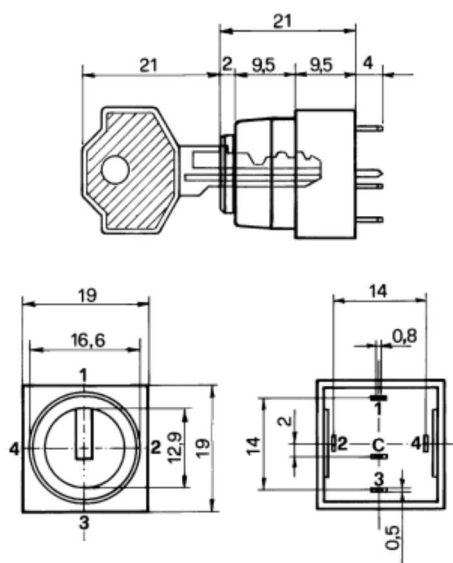
Conforms to rule EN 61000-4-2

Insulation among key and contacts :
 on air 8000V in contact 4000V

PCB holes Ø 1.1mm.

Special mounting: see [form](#)

 [printable page \(PDF\)](#)



Current breaking capacity:	0.3A 220Vac 0.8A 30Vdc (resistive load)
Contact resistance:	<9mohm (average initial value)
Insulation between contacts:	1200Vac 30x10 ⁹ ohm
Life expectancy:	>100.000 operations (test current = 0,1 max value)

Rohs Conformity: this product is compliant to
 european directive 2002/95/CEE - 27/01/2003

[Customize a standard switch, fill the form, e-mail](#)

[Switches materials and finishings](#)

[New switches on costumer specifications \(big productions\)](#)

